

## Double Sheet Metal Monitors and Sensors for processing thin metals and metal packaging materials



For the production and printing of metal packaging such as boxes, cans and barrels, thin metal sheets pass through several production processes.

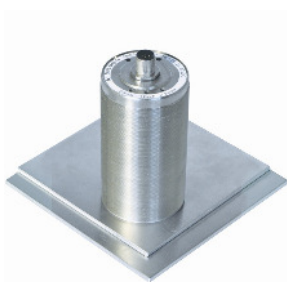
Double Sheet Metal Monitors and Double Sheet Metal Sensors are installed on feeders, stacking machines, and handling equipment used for the automated transport of such sheets to prevent damage to tools and machinery.

Depending on your requirements, these devices offer contact and non-contact monitoring of sheet thicknesses from 0.1 to 10 mm.

**BDK Compact**



**BDK Uno**



**BDK Duo**



**BDK Duo Flex**



## 1. Single-surface contact measurement

### 1.1 Ferrous (Fe) sheets: 0.15 ... 3.5 mm

#### Double Sheet Metal Monitor BDK Compact

- evaluation device BDK/I-1.4, Ref. no. 20.21-03

for one of the following sensors:

- DSP-54sg-2s, Ref. no. 13.05-95  
diameter 54 mm, thicknesses: 0.15 ... 3.5 mm
- DSP-36sg-2s, Ref. no. 13.05-96  
diameter 36 mm, thicknesses: 0.15 ... 1.5 mm

**Advantage: simple operation with Teach-In function.**

#### Double Sheet Metal Sensor BDK Uno Fe

Sensor with integral evaluation

- BFD/L-54sg-1s, Ref.no. 13.35-01  
diameter 54 mm

#### Advantages

- easy to incorporate into plant and machinery
- simple operation with Teach-In function
- no evaluation device necessary

### 1.2 Non-ferrous (NE) sheets: 0.15 ... 3.5 mm

- aluminium: 0.1 ... 6 mm
- stainless steel/ V2A: 0.3 ... 5 mm

#### Double Sheet Metal Sensor BDK Uno NE

Sensor with integral evaluation

diameter 54 mm

- BED/L-54sg-1s, Ref.no. 13.35-05,
- BEE/L-54sg-1s, Ref.no. 13.35-06, additionally with  
analogue voltage output
- BEF/L-54sg-1s, Ref.no. 13.35-07, additionally with  
analogue current output

#### Advantages

- easy to incorporate into plant and machinery
- simple operation with Teach-In function
- no evaluation device necessary

## 2. Double-surface non-contact measurement

**Typical application:** monitoring belt conveyor systems.

### 2.1 Ferrous (Fe), non-ferrous (NE) sheets

- Fe: 0.1 ... 2.0 mm
- aluminium, stainless steel, V2A: 0.1 ... 10 mm  
(depends on sheet type)

#### Double Sheet Metal Sensor BDK Duo

U-shaped (with integral transmitter + receiver)

- BWE/L-60as-1s, Ref. no. 13.35-02
- BWF/L-60as-1s, Ref. no. 13.35-04, additionally with  
analogue voltage output
- BWD/L-60as-1s, Ref. no. 13.35-03, additionally with  
analogue current output

#### Advantages

- simple operation with Teach-In function
- no evaluation device necessary
- also for air gaps and fluttering sheets
- also for textured surfaces

**Typical application:** mounting along the edges of belt conveyor systems.

#### Double Sheet Metal Sensor BDK Duo Flex

Sensor for flexible mounting, housing with integral evaluation electronics and separate transmitter module.

- BWE/L-60as-1s, Ref. no. 13.35-02
- BWF/L-60as-1s, Ref. no. 13.35-04, additionally with  
analogue voltage output
- BWD/L-60as-1s, Ref. no. 13.35-03, additionally with  
analogue current output

#### Advantages

- easy to incorporate, flexible mounting
- simple operation with Teach-In function
- no evaluation device necessary
- also for air gaps and fluttering sheets
- also for textured surfaces

**Typical application:** flexible mounting in belt conveyor systems.

#### Cost-effective, several variants

This range of products offers several alternatives for Double Sheet Metal Detection in the manufacture and processing of goods, for example in the metal packaging industry.

We look forward to helping you solve such problems.

Subject to changes !